



# COVID-19 SITUATION REPORT/ ICS FORM 202 (INCIDENT OBJECTIVES)

Jurisdiction		Grant County PUD		Incident Name		COVID-19 Response	
Incident Location:	Grant County		Operational Period Start:		9/08/2020 8:00 AM		
Incident Start Date:	March 4, 2020 (first case)		Operational Period End:		9/14/2020 8:00 AM		
State Incident #:	#20-0256 NOVEL COV		Criticality Level:		2-Severe		
<b>Chief Incident Commander:</b>	Dave Ponozzo	<b>Deputy Incident Commander:</b>	Fallon Long	<b>Admin/Scribe:</b>	Michelle Grout		

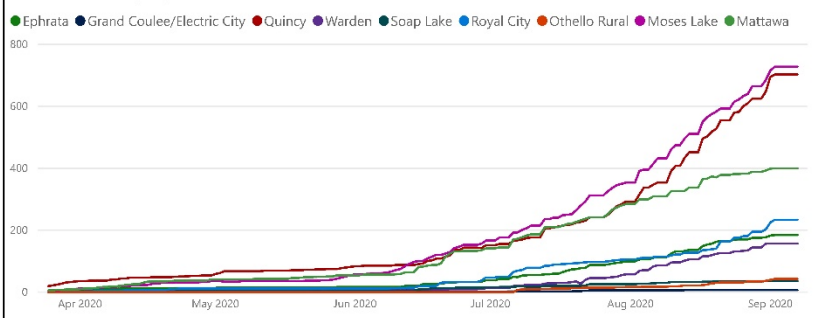
## DASHBOARD



Enterprise Risk Management

### Grant County COVID-19 Update (9/7/2020)

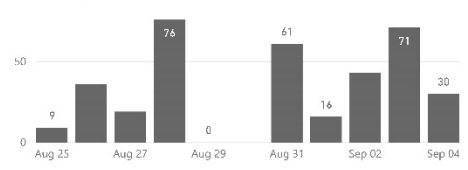
Confirmed Cases by City



Grant County Updates

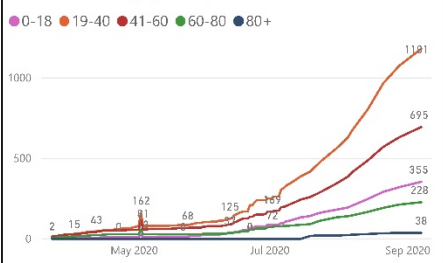


Daily Change in Cases (Last 14 Days)

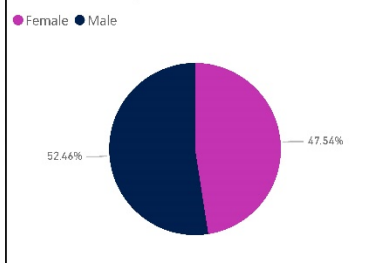


Estimated R(0): 1.10  
Directional Change: Decreasing

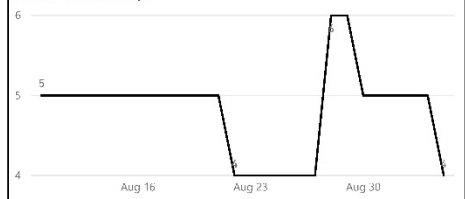
Confirmed Cases by Age Group



Confirmed Cases by Gender



Deaths (Last 30 Days)



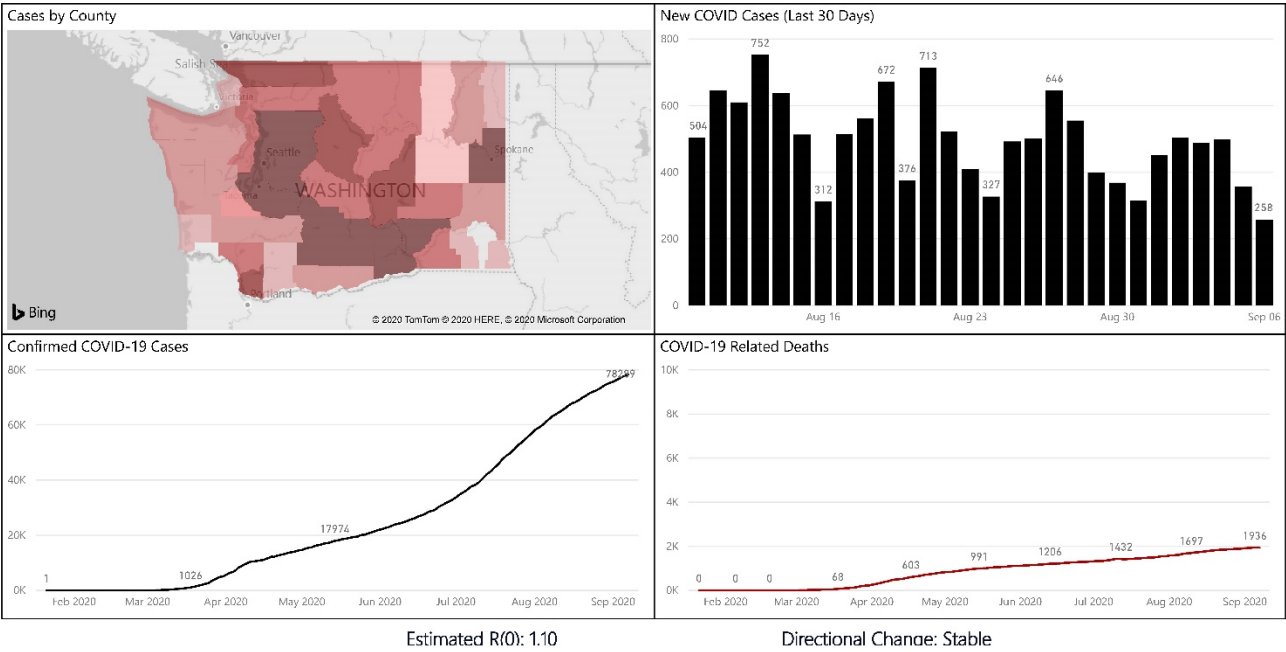


# COVID-19 SITUATION REPORT/ ICS FORM 202 (INCIDENT OBJECTIVES)



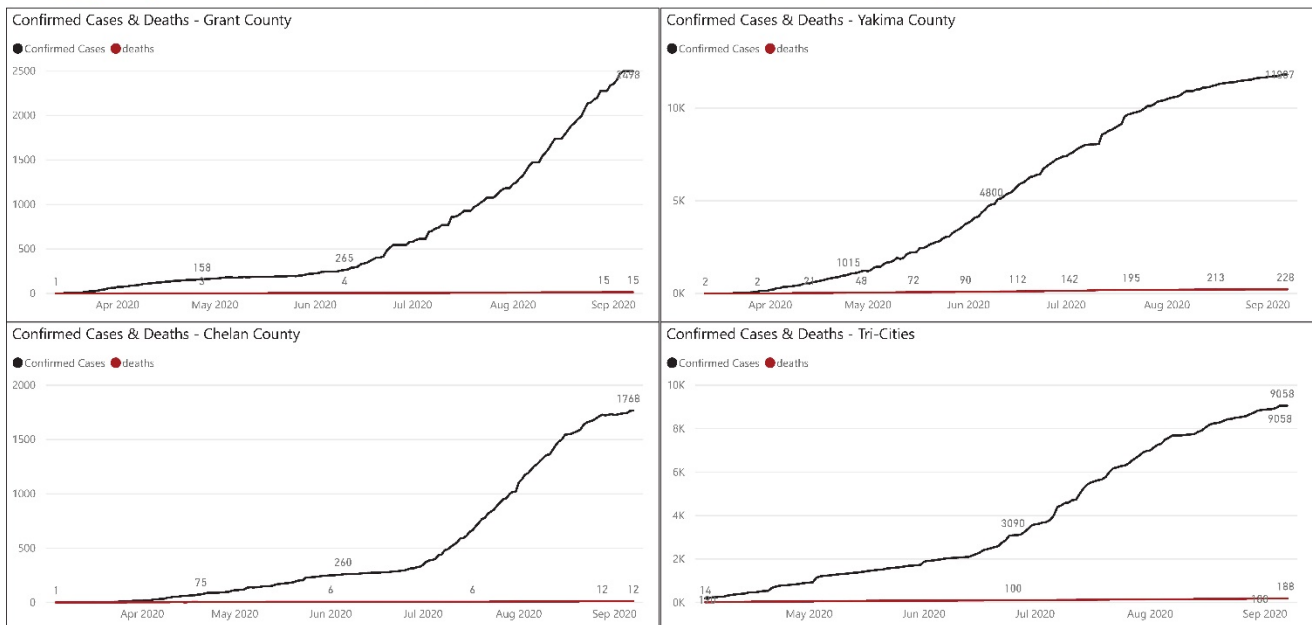
Enterprise Risk Management

## Washington County COVID-19 Update (9/7/2020)



Enterprise Risk Management

## Neighboring Counties COVID-19 Update (9/7/2020)





# COVID-19 SITUATION REPORT/ ICS FORM 202 (INCIDENT OBJECTIVES)



Enterprise Risk Management

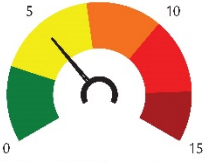
Last Updated 9/7/2020

## Incident Criticality Level Metrics

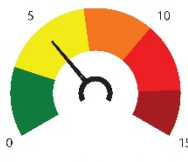
\*Active Employee Cases: 0

Employees with Exposure: 1

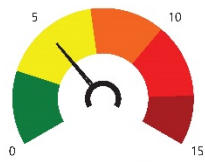
\*GCPUD Critical (Active Cases): 0



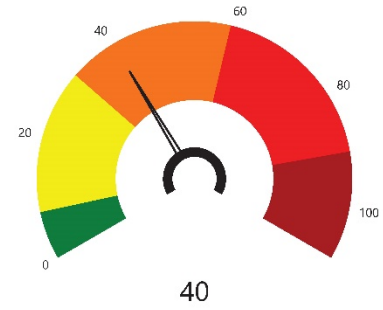
GCPUD Critical (With Exposure): 0



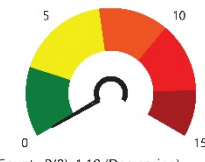
Grant County Deaths (Last 30 Days): 4



Grant County Active Cases: 433



Note: The metrics on the left add up to create the overall criticality level above.



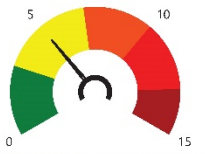
Grant County R(0): 1.10 (Decreasing)



Washington R(0): 1.10 (Stable)



ICU Beds Filled: 7.60%



Thresholds	Entry	Exit
Critical	75	60
Severe	40	32
Moderate	10	8
Normal	0	0

\*Note: Gauges for Active Employee Cases and GCPUD Critical (Active Cases) may be listed at moderate or normal levels when there are 0 cases depending on the potential threat to GCPUD employees contracting the virus that are not captured elsewhere in these metrics.