



# COVID-19 SITUATION REPORT/ ICS FORM 202 (INCIDENT OBJECTIVES)

Jurisdiction		Grant County PUD	Incident Name		COVID-19 Response
Incident Location:	Grant County		Operational Period Start:	8/17/2020 8:00 AM	
Incident Start Date:	March 4, 2020 (first case)		Operational Period End:	8/24/2020 8:00 AM	
State Incident #:	#20-0256 NOVEL COV		Criticality Level:	2-Severe	
<b>Chief Incident Commander:</b>	Dave Ponozzo	<b>Deputy Incident Commander:</b>	Fallon Long	<b>Admin/Scribe:</b>	Michelle Grout

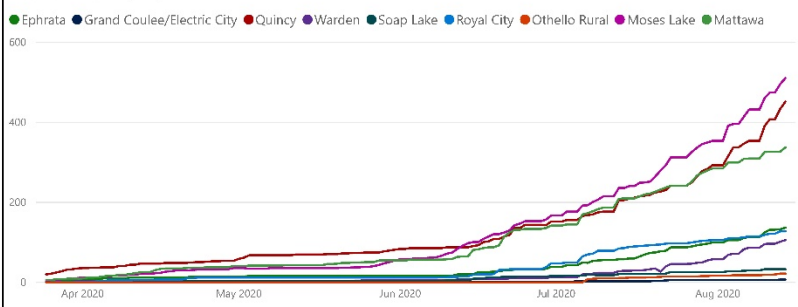
## DASHBOARD



### Grant County COVID-19 Update (8/16/2020)

Enterprise Risk Management

Confirmed Cases by City

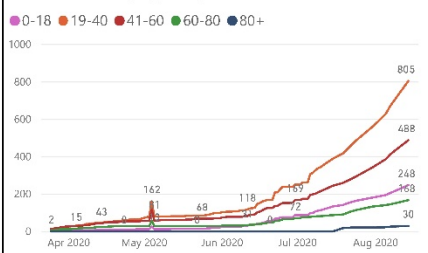


Grant County Updates

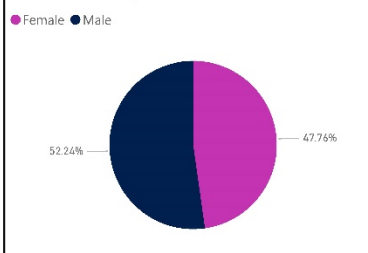
1740	492	19
Confirmed Cases	Estimated Active ...	Currently Hospitalized
13	805	0.503%
Deaths	Recovered	% of Population

Estimated R(0): 1.17  
Directional Change: Stable

Confirmed Cases by Age Group



Confirmed Cases by Gender



Deaths (Last 30 Days)



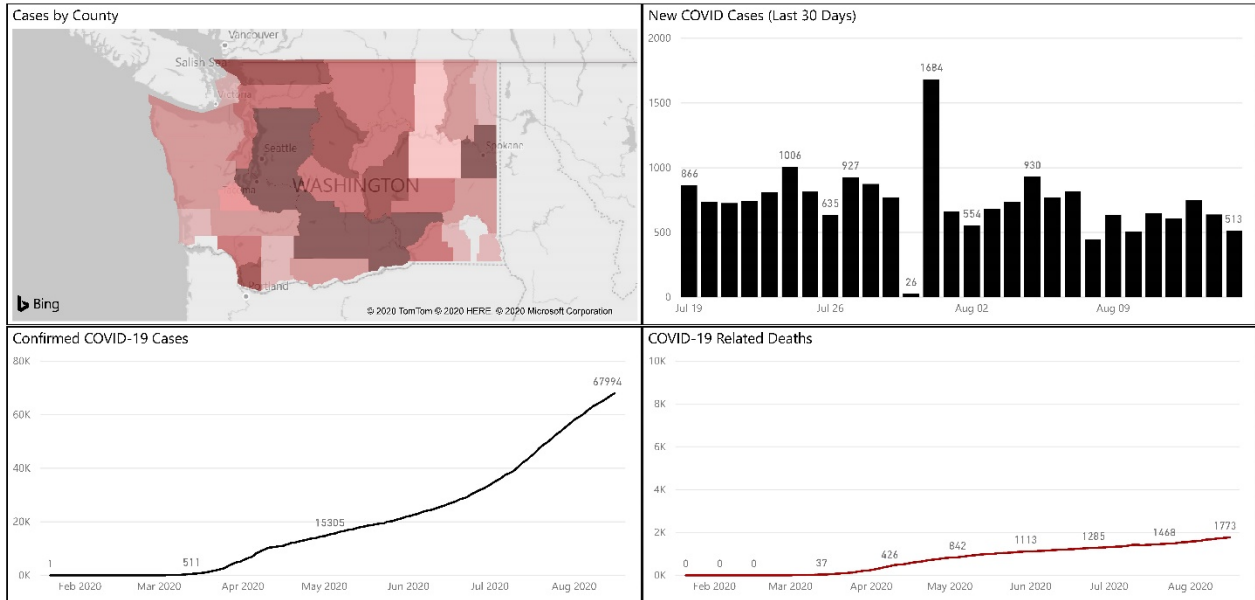


# COVID-19 SITUATION REPORT/ ICS FORM 202 (INCIDENT OBJECTIVES)



Enterprise Risk Management

## Washington County COVID-19 Update (8/16/2020)



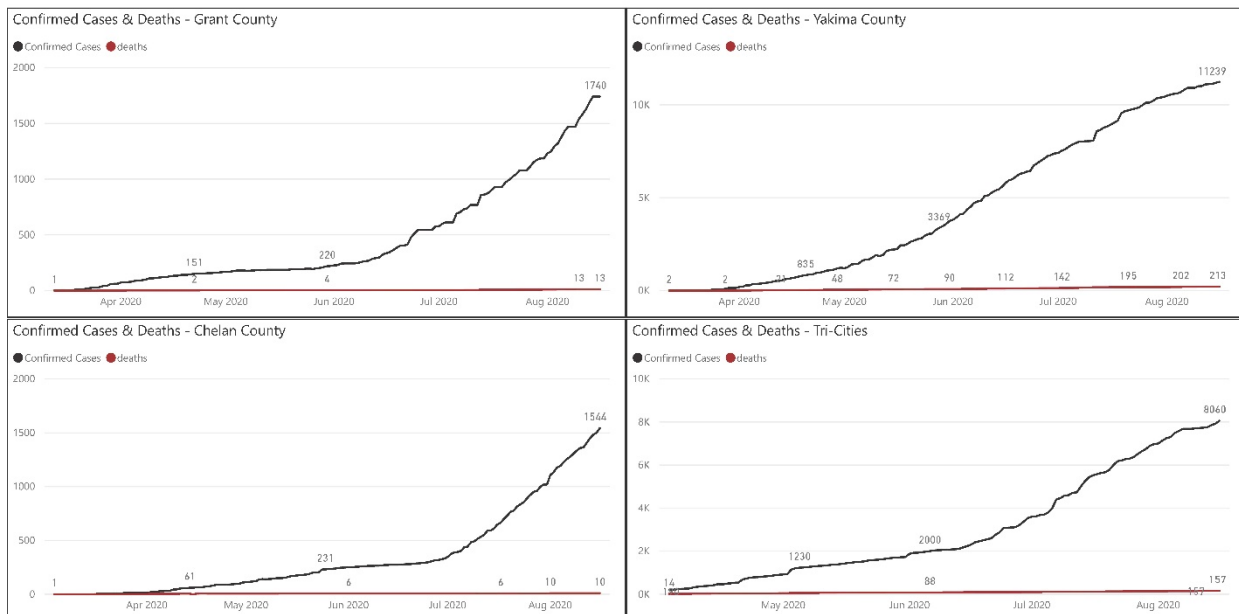
Estimated R(0): 1.105

Directional Change: Stable



Enterprise Risk Management

## Neighboring Counties COVID-19 Update (8/16/2020)





# COVID-19 SITUATION REPORT/ ICS FORM 202 (INCIDENT OBJECTIVES)



Enterprise Risk Management

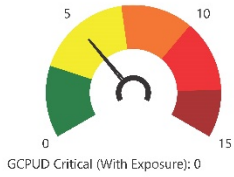
Last Updated 8/17/2020

## Incident Criticality Level Metrics

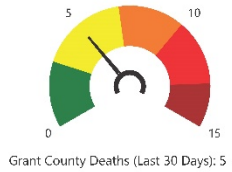
\*Active Employee Cases: 02

Employees with Exposure: 4

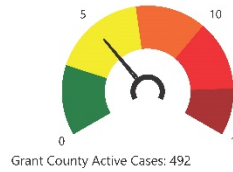
\*GCPUD Critical (Active Cases): 0



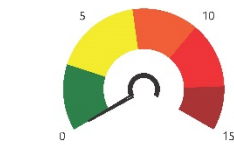
GCPUD Critical (With Exposure): 0



Grant County Deaths (Last 30 Days): 5



Grant County Active Cases: 492



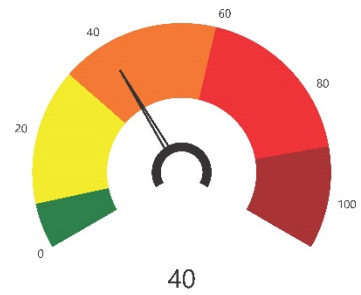
Grant County R(0): 1.17 (Stable)



Washington R(0): 1.105 (Stable)



ICU Beds Filled: 7.60%



Note: The metrics on the left add up to create the overall criticality level above.

Thresholds	Entry	Exit
Critical	75	60
Severe	40	32
Moderate	10	8
Normal	0	0

\*Note: Gauges for Active Employee Cases and GCPUD Critical (Active Cases) may be listed at moderate or normal levels when there are 0 cases depending on the potential threat to GCPUD employees contracting the virus that are not captured elsewhere in these metrics.