



COVID-19 SITUATION REPORT/ ICS FORM 202 (INCIDENT OBJECTIVES)

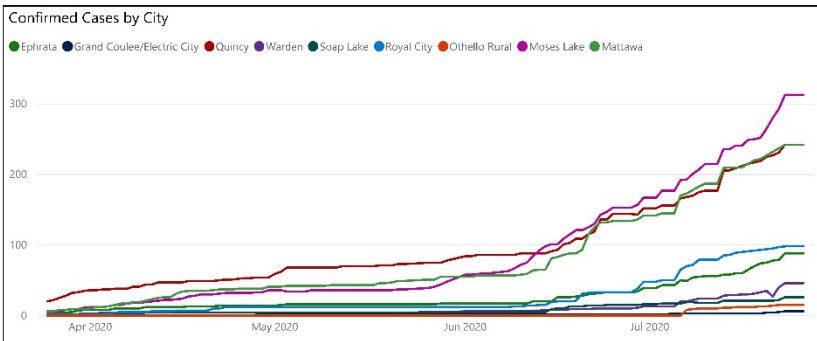
Jurisdiction		Grant County PUD		Incident Name		COVID-19 Response	
Incident Location:	Grant County		Operational Period Start:	7/27/2020 8:00 AM			
Incident Start Date:	March 4, 2020 (first case)		Operational Period End:	8/03/2020 8:00 AM			
State Incident #:	#20-0256 NOVEL COV		Criticality Level:			2-Severe	
Chief Incident Commander:	Dave Ponozzo	Deputy Incident Commander:	Fallon Long	Admin/Scribe:	Michelle Grout		

DASHBOARD



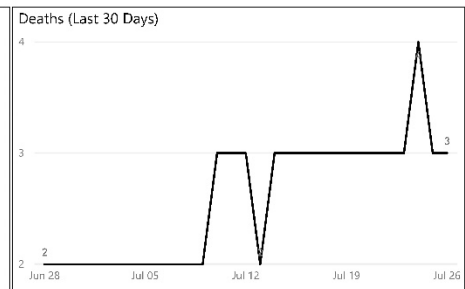
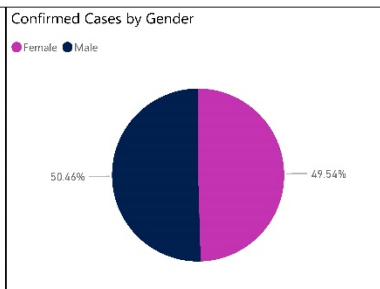
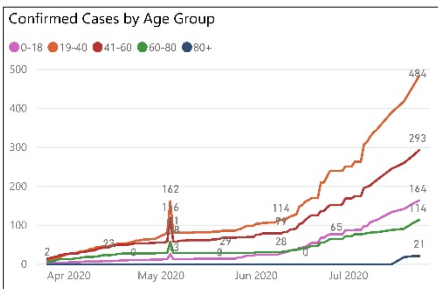
Enterprise Risk Management

Grant County COVID-19 Update (7/26/2020)



Grant County Updates		
1078	6418	309
Confirmed Cases	Negative Tests	Estimated Active Cases
9	9	464
Currently Hospital...	Deaths	Recovered
34	0.316%	
Probable	% of Population	

Estimated R(0): 1.12
Directional Change: Decreasing





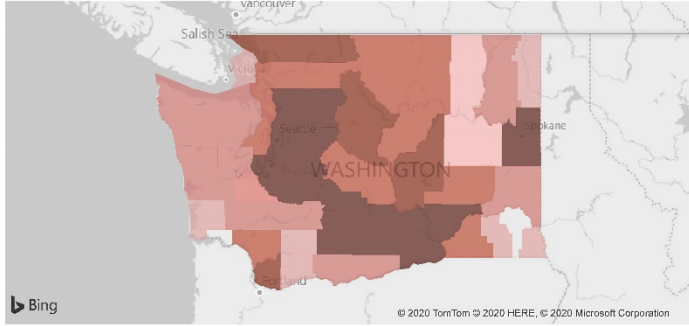
COVID-19 SITUATION REPORT/ ICS FORM 202 (INCIDENT OBJECTIVES)



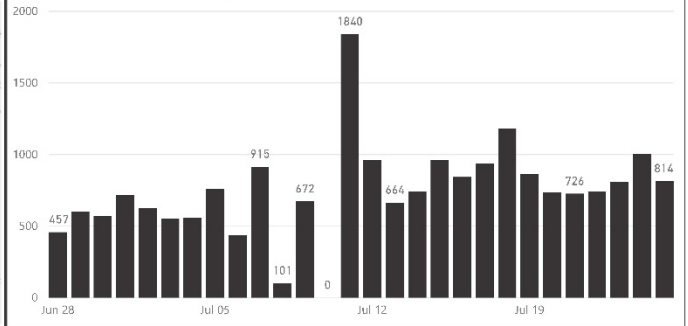
Enterprise Risk Management

Washington County COVID-19 Update (7/26/2020)

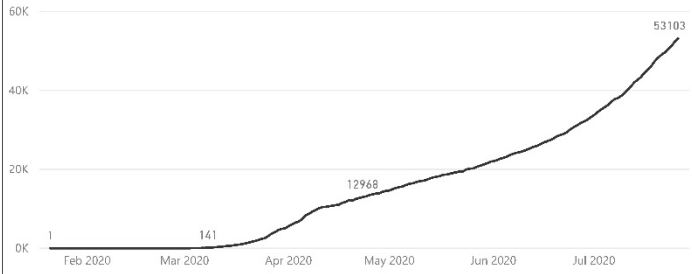
Cases by County



New COVID Cases (Last 30 Days)

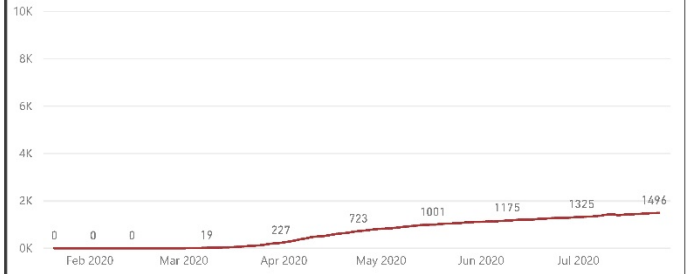


Confirmed COVID-19 Cases



Estimated R(0): 1.11

COVID-19 Related Deaths



Directional Change: Stable

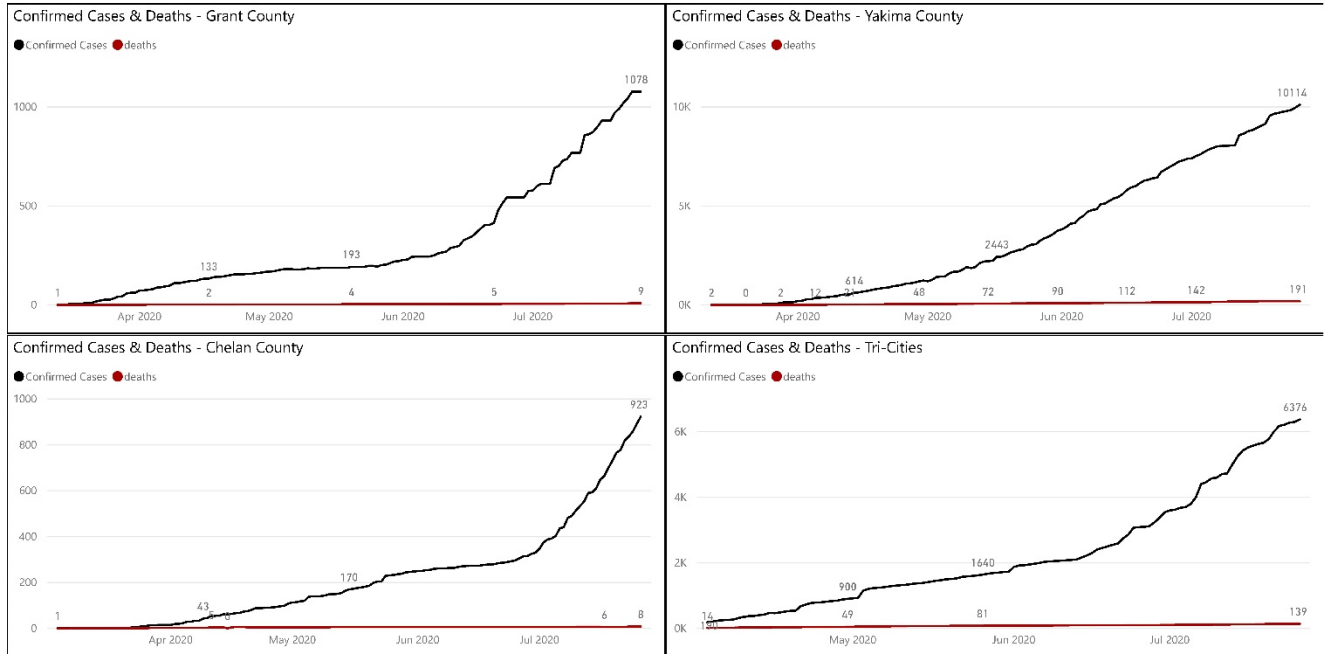


COVID-19 SITUATION REPORT/ ICS FORM 202 (INCIDENT OBJECTIVES)



Neighboring Counties COVID-19 Update (7/26/2020)

Enterprise Risk Management



Incident Criticality Level Metrics

Enterprise Risk Management

Last Updated 7/26/2020

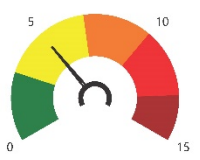
*Active Employee Cases: 1

Employees with Exposure: 8

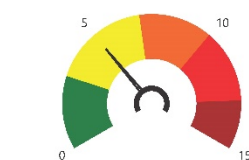
*GCPUD Critical (Active Cases): 0



GCPUD Critical (With Exposure): 0



Grant County Deaths (Last 30 Days): 3



Grant County Active Cases: 309



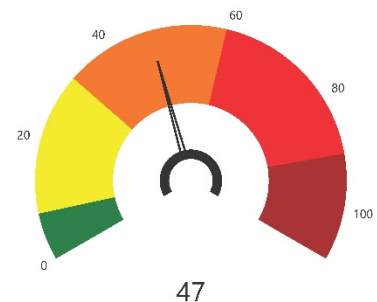
Grant County R(0): 1.12 (Decreasing)



Washington R(0): 1.11 (Stable)



ICU Beds Filled: 9.50%



Note: The metrics on the left add up to create the overall criticality level above.

Thresholds	Entry	Exit
Critical	75	60
Severe	40	32
Moderate	10	8
Normal	0	0

*Note: Gauges for Active Employee Cases and GCPUD Critical (Active Cases) may be listed at a moderate or normal level when there are 0 cases depending on the potential threat to GCPUD employees contracting the virus that are not captured elsewhere in these metrics.