



COVID-19 SITUATION REPORT/ ICS FORM 202 (INCIDENT OBJECTIVES)

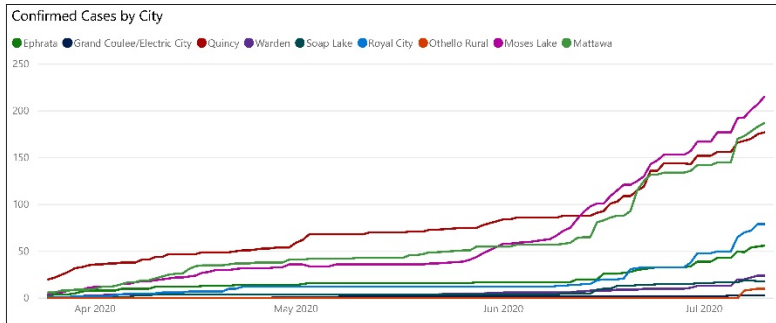
| Jurisdiction | | Grant County PUD | Incident Name | | COVID-19 Response |
|----------------------------------|----------------------------|-----------------------------------|---------------------------|----------------------|-------------------|
| Incident Location: | Grant County | | Operational Period Start: | 7/13/2020 8:00 AM | |
| Incident Start Date: | March 4, 2020 (first case) | | Operational Period End: | 7/23/2020 8:00 AM | |
| State Incident #: | #20-0256 NOVEL COV | | Criticality Level: | 2-Severe | |
| Chief Incident Commander: | Dave Ponozzo | Deputy Incident Commander: | Fallon Long | Admin/Scribe: | Michelle Grout |

DASHBOARD



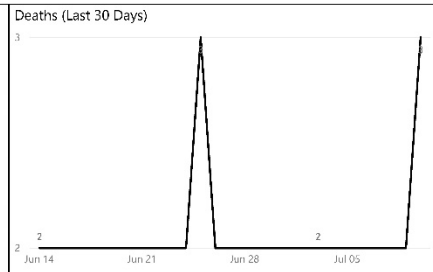
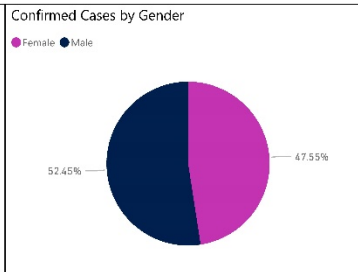
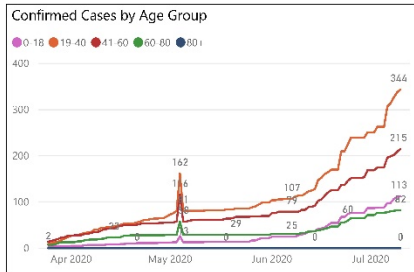
Grant County COVID-19 Update (7/12/2020)

Enterprise Risk Management



| Grant County Updates | | |
|-----------------------|-----------------|------------------------|
| 769 | 6418 | 226 |
| Confirmed Cases | Negative Tests | Estimated Active Cases |
| 13 | 7 | 244 |
| Currently Hospital... | Deaths | Recovered |
| 34 | 0.231% | |
| Probable | % of Population | |

Estimated R(0): 1.28
Directional Change: Decreasing



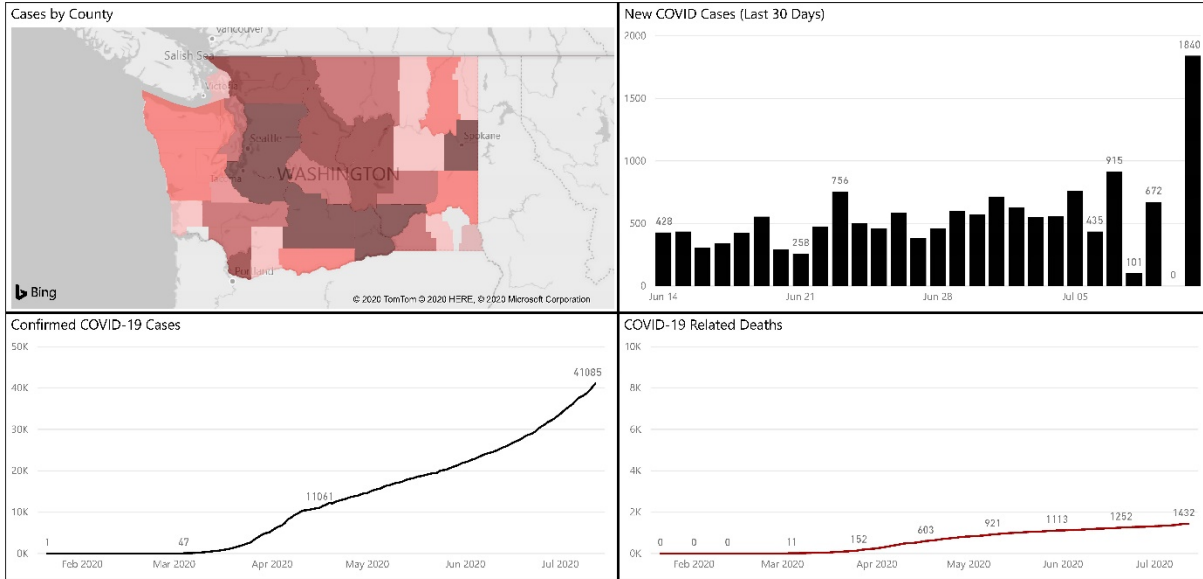


COVID-19 SITUATION REPORT/ ICS FORM 202 (INCIDENT OBJECTIVES)



Washington County COVID-19 Update (7/12/2020)

Enterprise Risk Management



Estimated R(0): 1.10

Directional Change: Stable

Note: John Hopkins had an error in their data which had confirmed cases in all Washington Counties the same for 6/10 and 6/11. It is likely that the 1,840 new cases found in the bar chart are from 6/10 and 6/11.

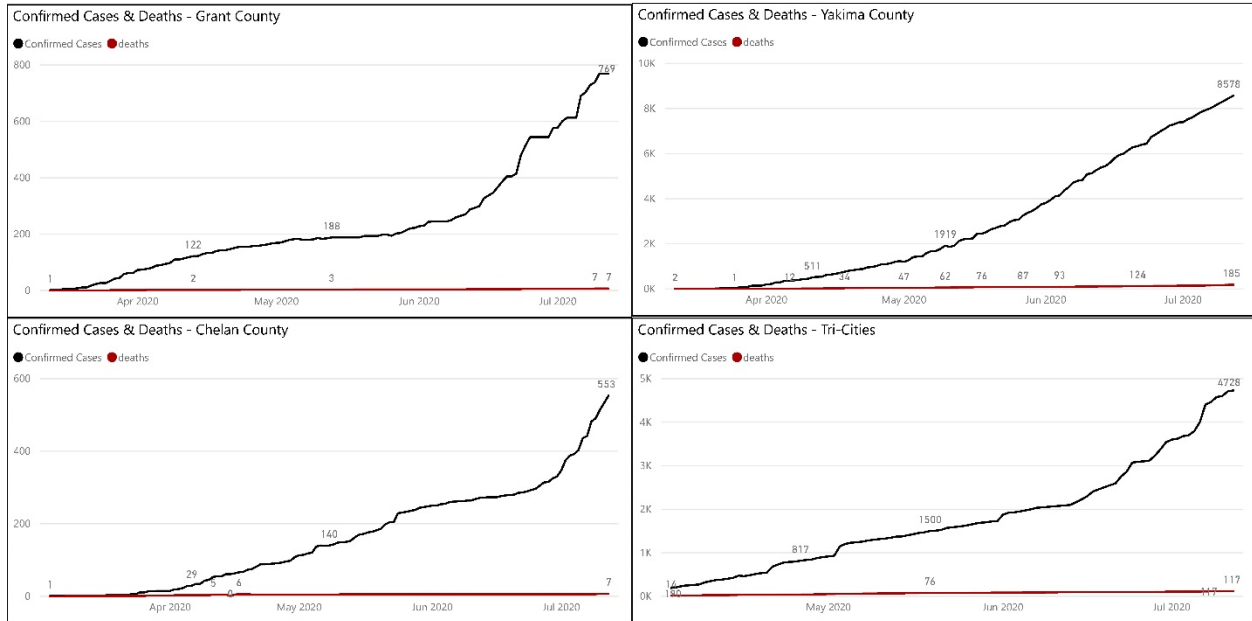


COVID-19 SITUATION REPORT/ ICS FORM 202 (INCIDENT OBJECTIVES)



Neighboring Counties COVID-19 Update (7/12/2020)

Enterprise Risk Management



Incident Criticality Level Metrics

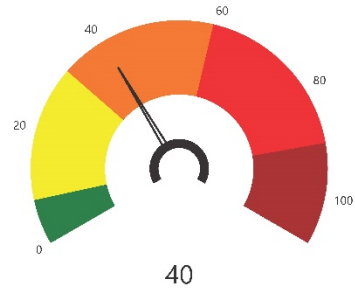
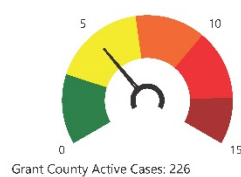
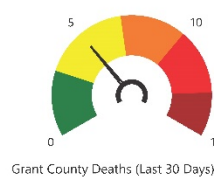
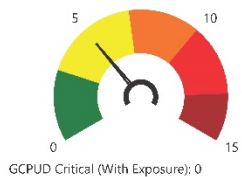
Enterprise Risk Management

Last Updated 7/12/2020

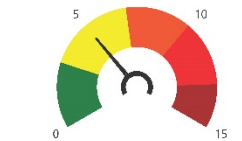
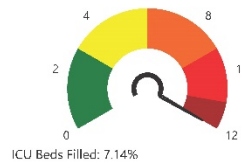
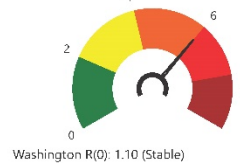
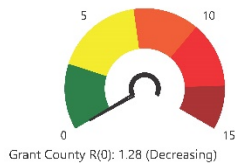
*Active Employee Cases: 0

Employees with Exposure: 3

*GCPUD Critical (Active Cases): 0



Note: The metrics on the left add up to create the overall criticality level above.



| Thresholds | Entry | Exit |
|------------|-------|------|
| Critical | 75 | 60 |
| Severe | 40 | 32 |
| Moderate | 10 | 8 |
| Normal | 0 | 0 |

*Note: Gauges for Active Employee Cases and GCPUD Critical (Active Cases) may be listed at moderate or normal levels when there are 0 cases depending on the potential threat to GCPUD employees contracting the virus that are not captured elsewhere in these metrics.