



COVID-19 SITUATION REPORT/ ICS FORM 202 (INCIDENT OBJECTIVES)

Jurisdiction		Grant County PUD		Incident Name		COVID-19 Response	
Incident Location:	Grant County		Operational Period Start:		6/29/2020 8:00 AM		
Incident Start Date:	March 4, 2020 (first case)		Operational Period End:		7/6/2020 8:00 AM		
State Incident #:	#20-0256 NOVEL COV		Criticality Level:		2 - Severe		
Chief Incident Commander:	Dave Ponozzo	Deputy Incident Commander:	Fallon Long	Admin/Scribe:	Michelle Grout		

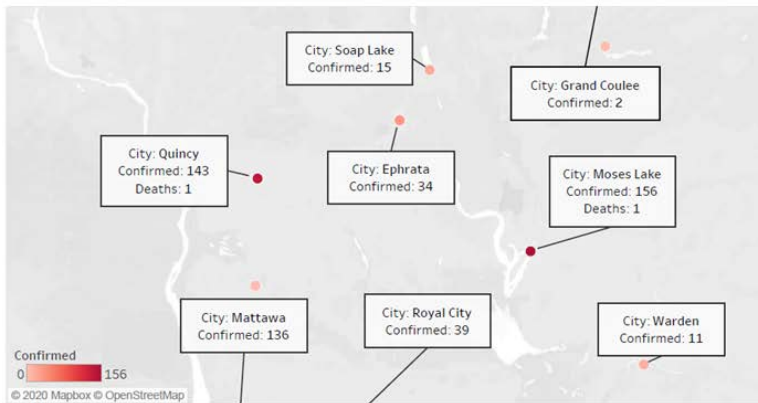
DASHBOARD



Grant County COVID-19 Update (as of 6/28/2020)

Data derived from John Hopkins University

Spread of Confirmed COVID-19 Cases



COVID-19 Test Results

Positive	544
Negative	3716
Pending Tests	250
Probable	34
Recovered	130
Estimated Active Cases	256
% of Population Affected	0.262%

Total Confirmed COVID-19 Cases
Grant County



Total COVID-19 Related Deaths
Last 30 Days



Enterprise Risk Management

Estimated R(0): 1.40

Directional Change: Increasing



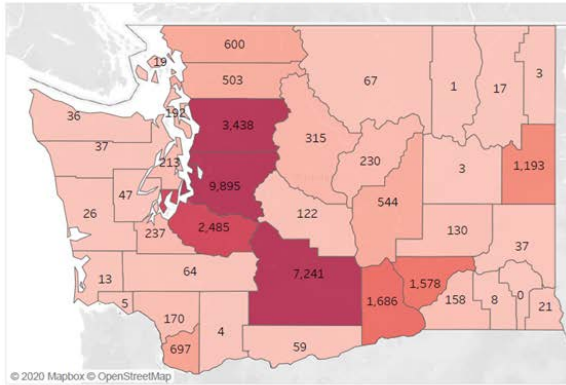
COVID-19 SITUATION REPORT/ ICS FORM 202 (INCIDENT OBJECTIVES)



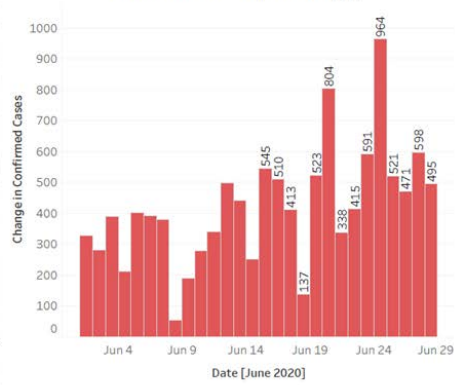
Washington COVID-19 Update (as of 6/28/2020)

Data derived from John Hopkins University

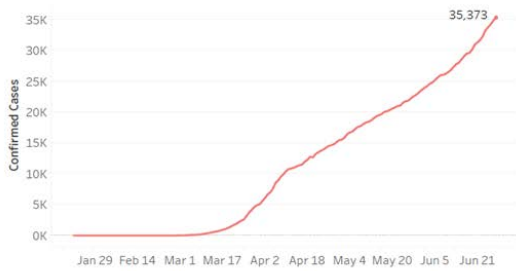
Spread of Confirmed COVID-19 Cases



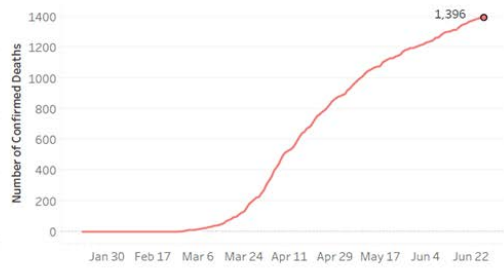
New COVID-19 Cases (last 30 Days)



Total Confirmed COVID-19 Cases



Total COVID-19 Related Deaths



Enterprise Risk Management

Estimated R(0) : 1.095

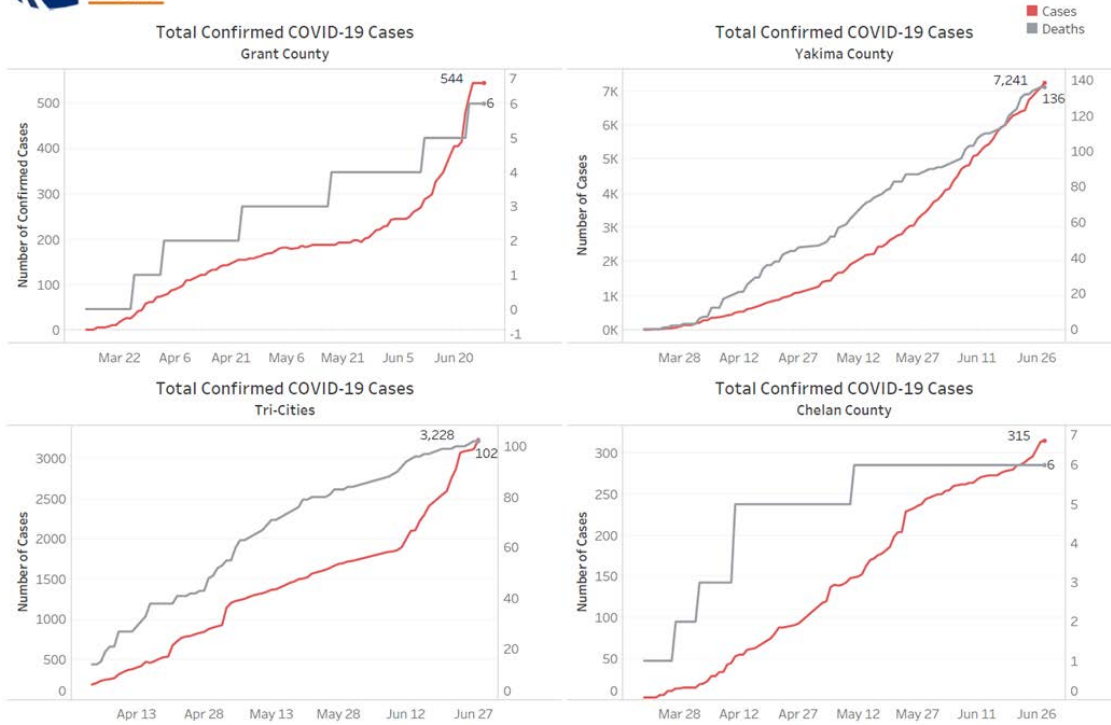
Directional Change : Increasing



COVID-19 SITUATION REPORT/ ICS FORM 202 (INCIDENT OBJECTIVES)



Confirmed COVID-19 Cases Among Neighboring Counties (as of 6/28/2020)





COVID-19 SITUATION REPORT/ ICS FORM 202 (INCIDENT OBJECTIVES)

Enterprise Risk Management

Last Updated 6/29/2020

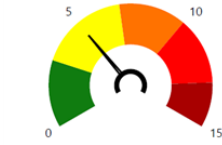


Incident Criticality Level Metrics

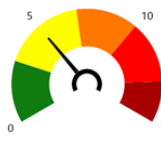
*Active Employee Cases: 0

Employees with Exposure: 4

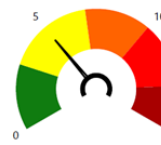
*GCPUD Critical (Active Cases): 0



GCPUD Critical (With Exposure): 1



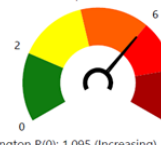
Grant County Deaths (Last 30 Days): 3



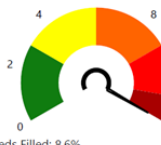
Grant County Active Cases: 256



Grant County R(0): 1.40 (Increasing)



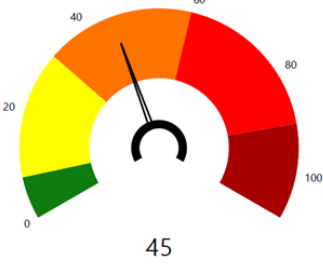
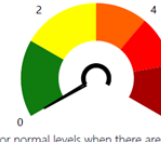
Washington R(0): 1.095 (Increasing)



ICU Beds Filled: 8.6%



*Note: Gauges for Active Employee Cases and GCPUD Critical (Active Cases) may be listed at moderate or normal levels when there are 0 cases depending on the potential threat to GCPUD employees contracting the virus that are not captured elsewhere in these metrics.



Note: The metrics on the left add up to create the overall criticality level above.

Thresholds	Entry	Exit
Critical	75	60
Severe	40	32
Moderate	10	8
Normal	0	0