



# COVID-19 SITUATION REPORT/ ICS FORM 202 (INCIDENT OBJECTIVES)

Jurisdiction		Grant County PUD		Incident Name		COVID-19 Response	
Incident Location:	Grant County		Operational Period Start:		6/22/2020 8:00 AM		
Incident Start Date:	March 4, 2020 (first case)		Operational Period End:		6/25/2020 8:00 AM		
State Incident #:	#20-0256 NOVEL COV		Criticality Level:		2 - Severe		
<b>Chief Incident Commander:</b>	Dave Ponozzo	<b>Deputy Incident Commander:</b>	Fallon Long	<b>Admin/Scribe:</b>	Michelle Grout		

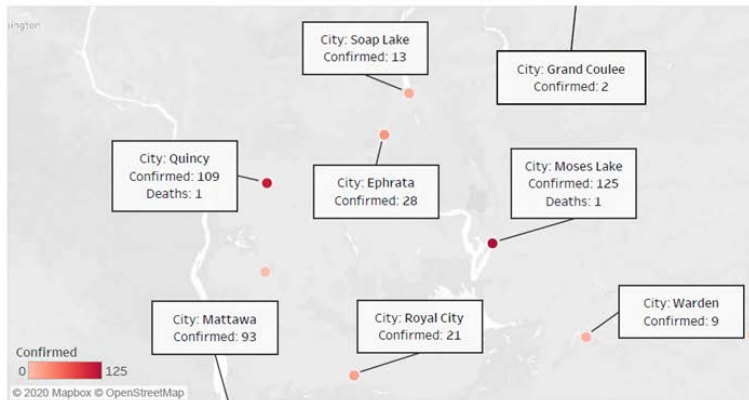
## DASHBOARD



### Grant County COVID-19 Update (as of 6/21/2020)

Data derived from John Hopkins University

#### Spread of Confirmed COVID-19 Cases



#### COVID-19 Test Results

Positive	405
Negative	3716
Pending Tests	250
Probable	34
Recovered	130
Active Cases	270
% of Population Affected	0.276%

#### Total Confirmed COVID-19 Cases Grant County



#### Total COVID-19 Related Deaths Last 30 Days



Enterprise Risk Management

Estimated R(0): 1.40

Directional Change: Increasing



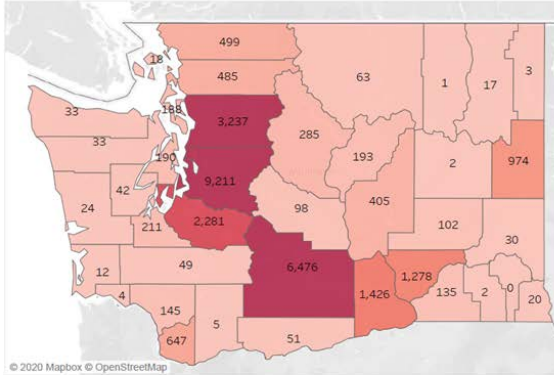
# COVID-19 SITUATION REPORT/ ICS FORM 202 (INCIDENT OBJECTIVES)



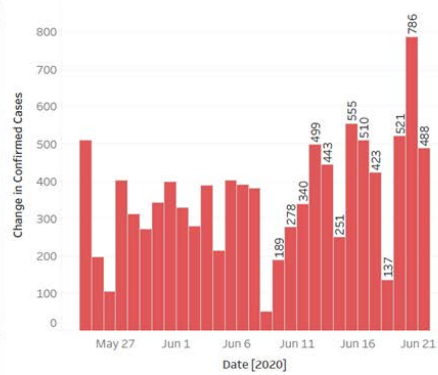
## Washington COVID-19 Update (as of 6/21/2020)

Data derived from John Hopkins University

Spread of Confirmed COVID-19 Cases



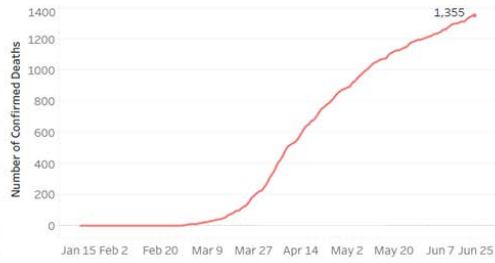
New COVID-19 Cases (last 30 Days)



Total Confirmed COVID-19 Cases



Total COVID-19 Related Deaths



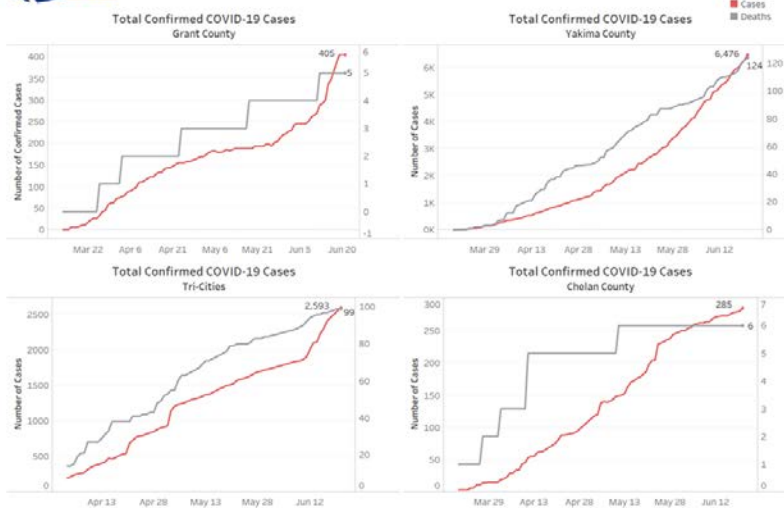
Enterprise Risk Management

Estimated R(0): 1.095

Directional Change: Increasing



## Confirmed COVID-19 Cases Among Neighboring Counties (as of 6/21/2020)



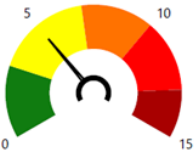
Enterprise Risk Management

# COVID-19 SITUATION REPORT/ ICS FORM 202 (INCIDENT OBJECTIVES)

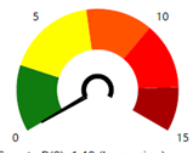


## Incident Criticality Level Metrics

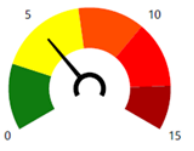
\*Active Employee Cases: 0



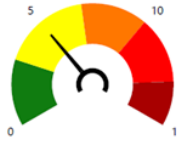
GCPUD Critical (With Exposure): 0



Grant County R(0): 1.40 (Increasing)



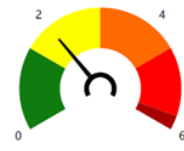
Employees with Exposure: 1



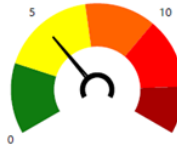
Grant County Deaths (Last 30 Days): 2



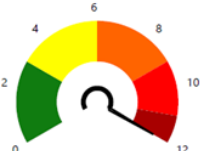
Washington R(0): 1.095 (Increasing)



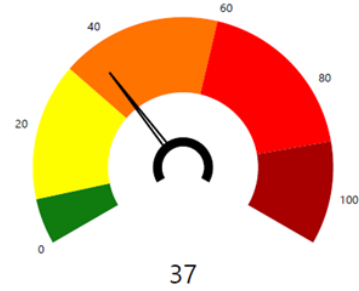
\*GCPUD Critical (Active Cases): 0



Grant County Active Cases: 228



ICU Beds Filled: 7.1%



Note: The metrics on the left add up to create the overall criticality level above.

Thresholds	Entry	Exit
Critical	75	60
Severe	40	32
Moderate	10	8
Normal	0	0

\*Note: Gauges for Active Employee Cases and GCPUD Critical (Active Cases) may be listed at moderate or normal levels when there are 0 cases depending on the potential threat to GCPUD employees contracting the virus.