



COVID-19 SITUATION REPORT/ ICS FORM 202 (INCIDENT OBJECTIVES)

Jurisdiction		Grant County PUD		Incident Name		COVID-19 Response	
Incident Location:	Grant County		Operational Period Start:		6/15/2020 8:00 AM		
Incident Start Date:	March 4, 2020 (first case)		Operational Period End:		6/22/2020 8:00 AM		
State Incident #:	#20-0256 NOVEL COV		Criticality Level:		3 Moderate		
Chief Incident Commander:	Dave Ponozzo	Deputy Incident Commander:	Fallon Long	Admin/Scribe:	Michelle Grout		

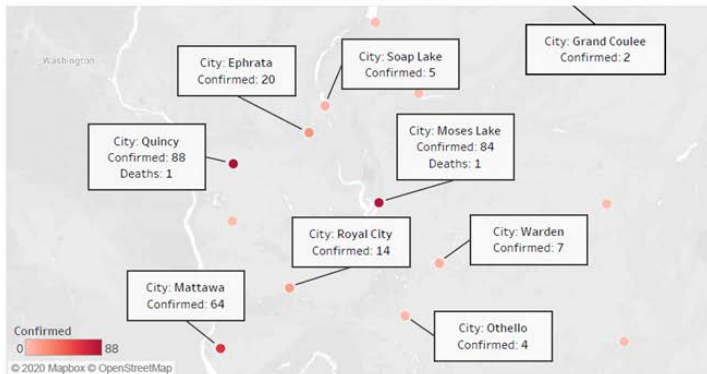
DASHBOARD



Grant County COVID-19 Update (as of 6/12/2020)

Data derived from John Hopkins University

Spread of Confirmed COVID-19 Cases



COVID-19 Test Results

Positive	288
Negative	3716
Pending Tests	250
Probable	34
Recovered	130
Active Cases	153
% of Population Affected	0.157%

Total Confirmed COVID-19 Cases
Grant County



Total COVID-19 Related Deaths
Last 30 Days



Enterprise Risk Management

Estimated R(0): 1.12

Directional Change: Stable



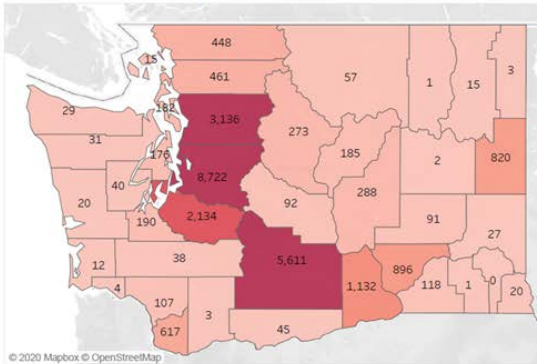
COVID-19 SITUATION REPORT/ ICS FORM 202 (INCIDENT OBJECTIVES)



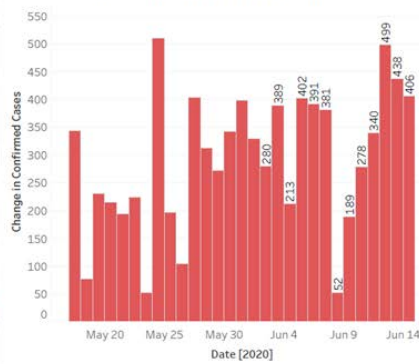
Washington COVID-19 Update (as of 6/14/2020)

Data derived from John Hopkins University

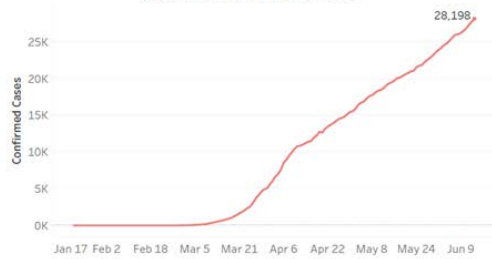
Spread of Confirmed COVID-19 Cases



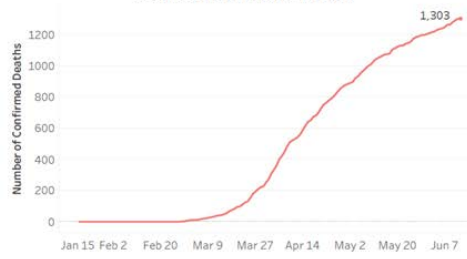
New COVID-19 Cases (last 30 Days)



Total Confirmed COVID-19 Cases



Total COVID-19 Related Deaths



Enterprise Risk Management

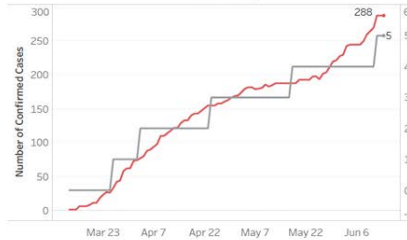
Estimated R(0): 1.09

Directional Change: Increasing

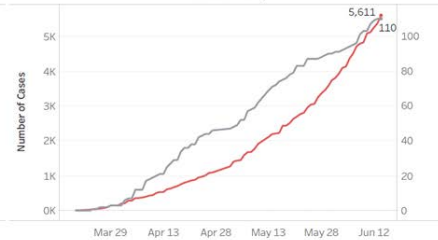


Confirmed COVID-19 Cases Among Neighboring Counties (as of 6/14/2020)

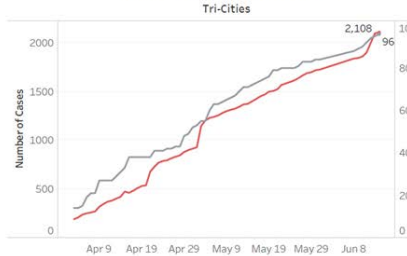
Total Confirmed COVID-19 Cases
Grant County



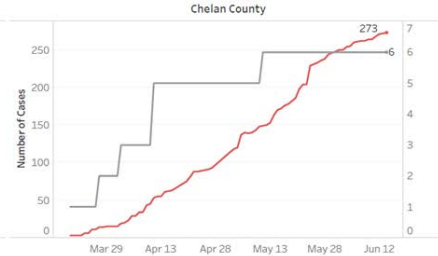
Total Confirmed COVID-19 Cases
Yakima County



Total Confirmed COVID-19 Cases
Tri-Cities



Total Confirmed COVID-19 Cases
Chelan County



Enterprise Risk Management



COVID-19 SITUATION REPORT/ ICS FORM 202 (INCIDENT OBJECTIVES)



Incident Criticality Level Metrics

Active Employee Cases
Current: 0



Employees with Exposure
Current: 0



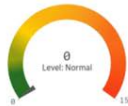
GCPUD Critical Employee Cases
Current: 0



Overall Criticality Level



GCPUD Critical Employees with Exposure
Current: 0



Grant County Deaths Over Last 30 Days
Current: 3



Active Grant County Cases
Current: 153



Grant County R(0)
Current: 1.12



WA State R(0)
Current: 1.89



ICU Beds Filled
Current: 6.25



Stable

Increasing

Enterprise Risk Management

Note: The metrics on the left add up to create the overall criticality level above.

Thresholds	Entry	Exit
Critical	75	60
Severe	40	32
Moderate	10	8
Normal	0	0